

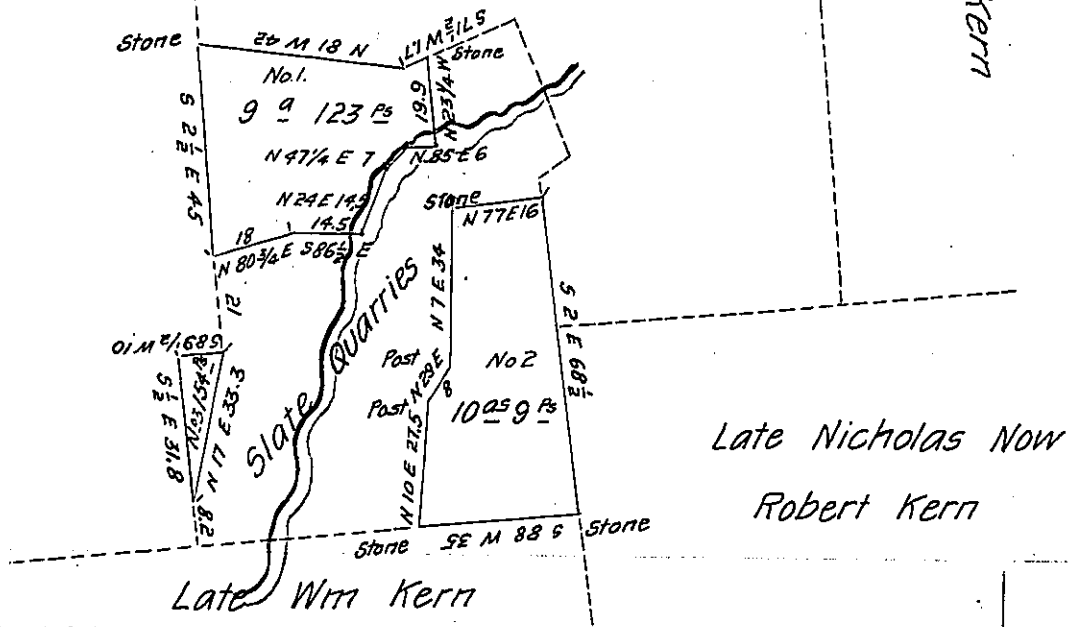
Late Leonard Fuhr

Late John Rhoads

Frederick Kern

John Kern

Late
John Wassum
Now
Charles Dorward



Drafts of 3 tracts of land situated in Heidelberg (Now Wash-
ington) township in the County of Lehigh containing twenty acres one hun-
dred and twenty-six perches and allowance of six per cent for roads &c.
Surveyed for Charles Dorward Robert Kern and "The Peter's Company "
the 5th day of August 1870 being a part of a larger tract of one hundred &
eighty-one Acres Sixty four perches and allowance ; Originally Surveyed in
pursuance of a Warrant granted to John Rhoads dated the thirty-first day
of October 1753

Geo. Blank C.S.

To J. M. Campbell Esqr.

Surveyor General.

IN TESTIMONY that the above is a copy of the original remaining on file in
the Department of Internal Affairs of Pennsylvania, made
conformably to an Act of Assembly approved the 16th day of
February, 1833, I have hereunto set my Hand and caused
the Seal of said Department to be affixed at Harrisburg,
this twenty first day of September 1906

Isaac B. Brown
Secretary of Internal Affairs.